



**Heart Support  
– Australia**  
**Perth Metropolitan Branch**  
PO Box 3239, Broadway Nedlands WA 6009

# NEWSLETTER

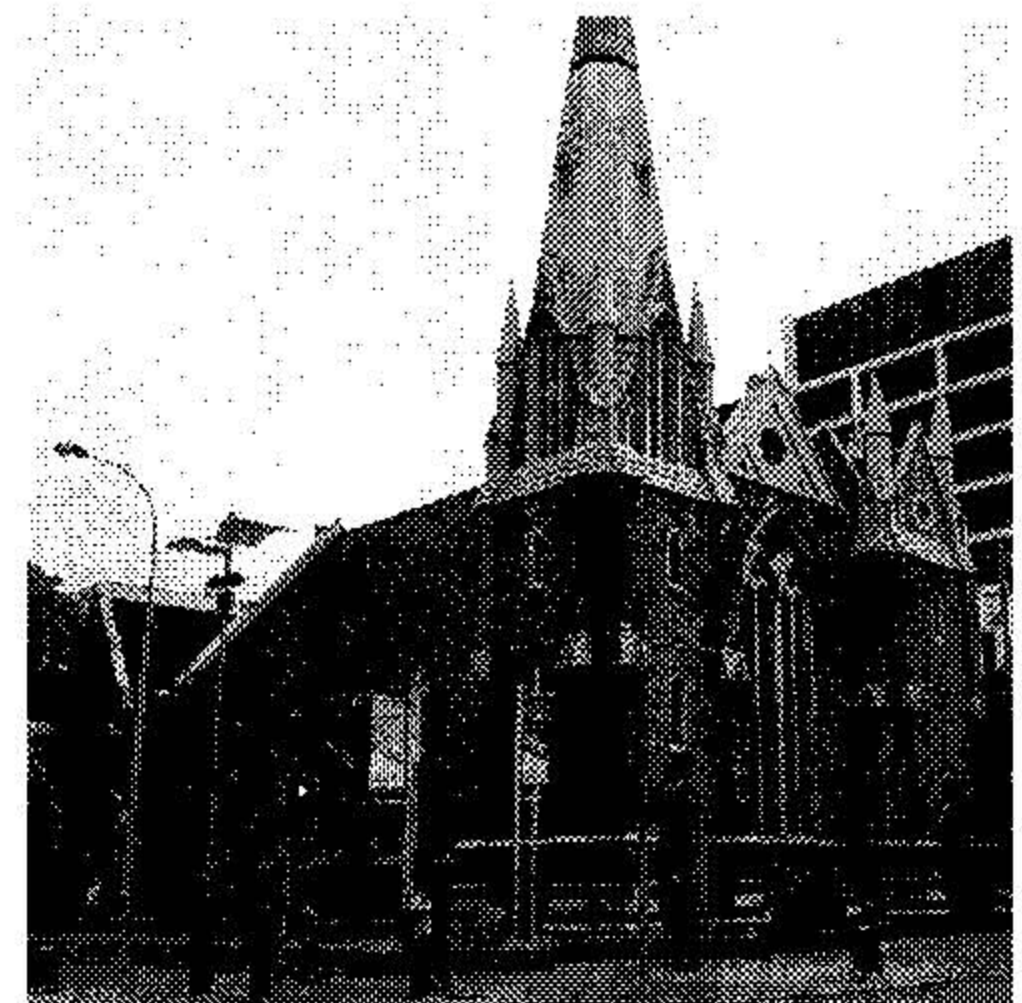
April 2011

## Next Branch meetings:

**Monday 4<sup>th</sup> April**

**Monday 2<sup>nd</sup> May**

Meetings are in “The Guild Room”, a basement-level meeting room next to Wesley Uniting Church, William Street (corner of Hay Street), Perth. Meetings start at 12-00 noon; bring your lunch to eat during the meeting. Tea and coffee are available before and after the meeting.



---

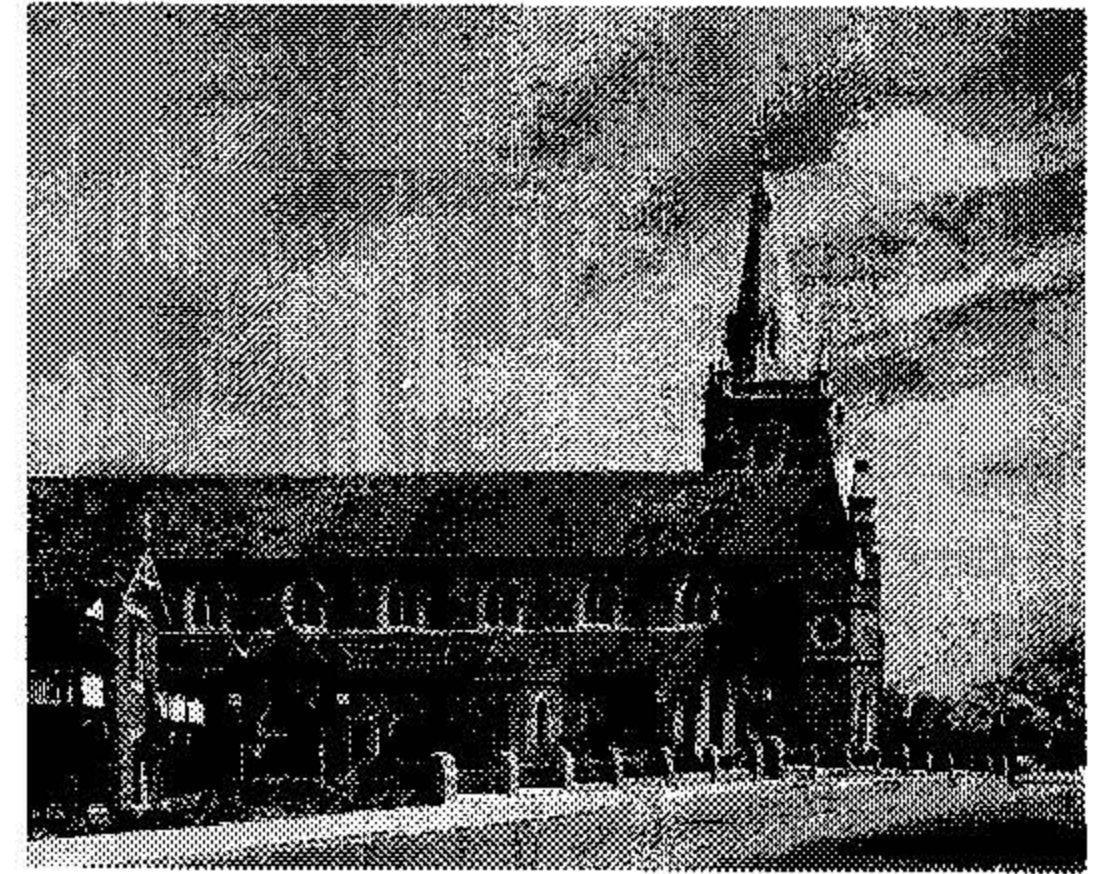
## New information leaflets

A new version of our information leaflet has been sent to Malaga Copy Centre for printing. The leaflets are distributed by our hospital visitors. The new printing has been made necessary because of changes in some of the information included. There has been some re-design of the front cover, so that the new version can be easily recognised.

# Memorial and Thanksgiving Service

The Heart Foundation invites you and your family to share in an interdenominational Service of Remembrance and Thanksgiving:

**Sunday 1st May, from 2.00pm to 3.00pm,  
in Saint Joseph's Catholic Church,  
1 Salvado Road, Subiaco.**



The Church is close to Subiaco Railway Station. Paid parking is available in the St John of God Hospital carpark (across the road from the church), and also in a carpark close to Subiaco Station. Heart Foundation would appreciate having an indication of numbers of people attending, by 18th April.

Postal address 334 Rokeby Road, Subiaco 6008.  
Phone 9388 3343 during office hours.  
E-mail: [wa@heartfoundation.org.au](mailto:wa@heartfoundation.org.au)

## To contact us:

President:                      Graham Neville                      9458 6850  
E-mail: [perth@heartnet.org.au](mailto:perth@heartnet.org.au)

Secretary:                      David McAndrew                      9343 2947  
E-mail: [davemcan@bigpond.net.au](mailto:davemcan@bigpond.net.au)

For heart health support: phone **1300 661 351**

The cost is a local call charge from anywhere in WA. The number is switched between the homes of some of our members, and may take a while to be answered.

Postal address:  
Heart Support – Australia  
PO Box 3239  
Broadway Nedlands WA 6009

# National Rural Health Conference

The 11<sup>th</sup> Biennial Conference was held at the Perth Convention Centre from 13 – 16 March.

It commenced on Sunday with a Welcome to Country by indigenous dancers Barry McGuire and Gya Gnoop Keeninyarra (One Blood Dancers) who put on an excellent performance.

The Opening Address and Welcome to WA was by Jenny May and Kim Snowball, Director General representing the Deputy Premier and Minister for Health Kim Hames.

There were over 1000 delegates attending the Conference including, country health professionals – Doctors, Nurses, Allied Health Professionals, Medical students (100 of them) representatives of Country Health Services and consumer agencies from all over Australia and overseas.

The keynote speakers at the plenary (compulsory) sessions were excellent and covered themes such as “Rural families as health consumers”, “Health and wellbeing Australia’s first peoples” “The social determinants of good health” “Public health in the bush” “Workforce issues in country and remote areas”.

A very interesting speaker was Sam Prince a 26 year old Doctor, who set up a Mexican Food chain while he was still at Medical School which become No 1 on the BRW list. He recently became the Principal of a health program called “One Disease at a Time” to eradicate scabies in Australia.

Brendan Grylls, WA Minister for Regional Development spoke on how he is improving rural & remote health services with his Royalty for Regions program.

On the Monday afternoon I presented a talk in the Heart Foundation stream meeting room on “Ongoing support for rural heart patients” This speech was authored by David and myself and covering the work of our Heart Health Support Service visitors in meeting country patients in hospital who have had recent heart surgery. Also on return

to their homes how we considered that the cardiac rehabilitation services in the country were very limited. As discussed at our last meeting we put a recommendation in that the State Government investigate the improvement of cardiac rehabilitation services in the country. Our recommendation (one of 250 submitted) was not selected in the final 10 but it is still available on the NRHA website.

On the Tuesday morning I was invited to a breakfast hosted by the Rural Health Education Foundation. This organisation is the only national non-profit organisation dedicated to delivering free accredited and accessible health and medical education to healthcare teams and their communities in remote and rural Australia. This is achieved through a national satellite television network to more than 670 sites and also some broadcasts on SBS television.

There were too many keynote speakers to list them here, but their speeches can be seen and heard on the NRHA website at [11nrhc.ruralhealth.org.au](http://11nrhc.ruralhealth.org.au)

Nicola Roxon closed the Conference saying that the Government understands the inequity experienced by country people and they are determined to correct it.

Sincere thanks to the National Rural Health Alliance for approving my application for the WA Community Grant sponsored by the Lotteries Commission otherwise I would not have been able to attend this most interesting and educational conference.

*Graham Neville*

---

## **Farewell to Gael**

We have just been informed that one of our members, Gael McDowall, died last September. Gael was a member of HSA for many years. Although she lived quite a distance from Perth, on some occasions she travelled down to attend our Christmas Lunch. We offer our sympathy to her family.